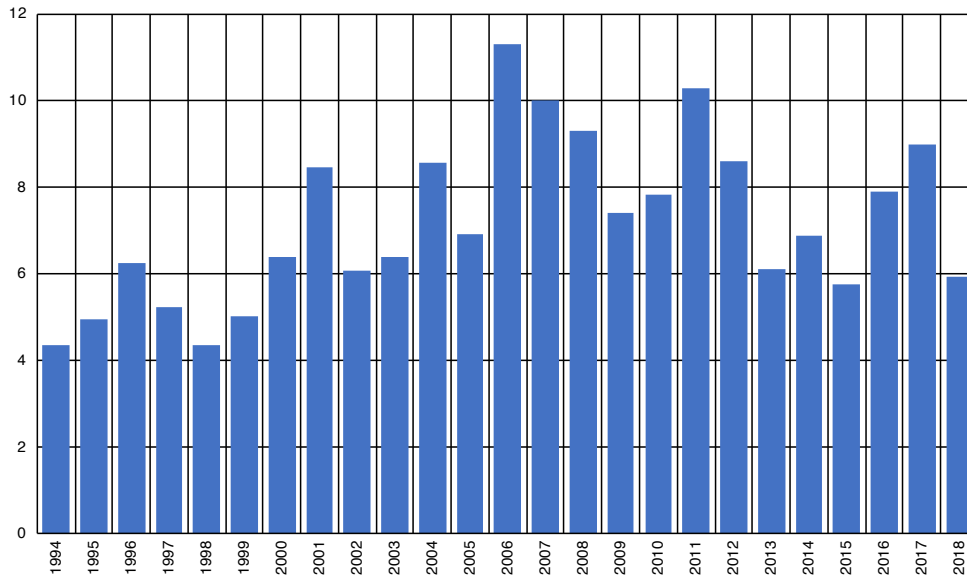
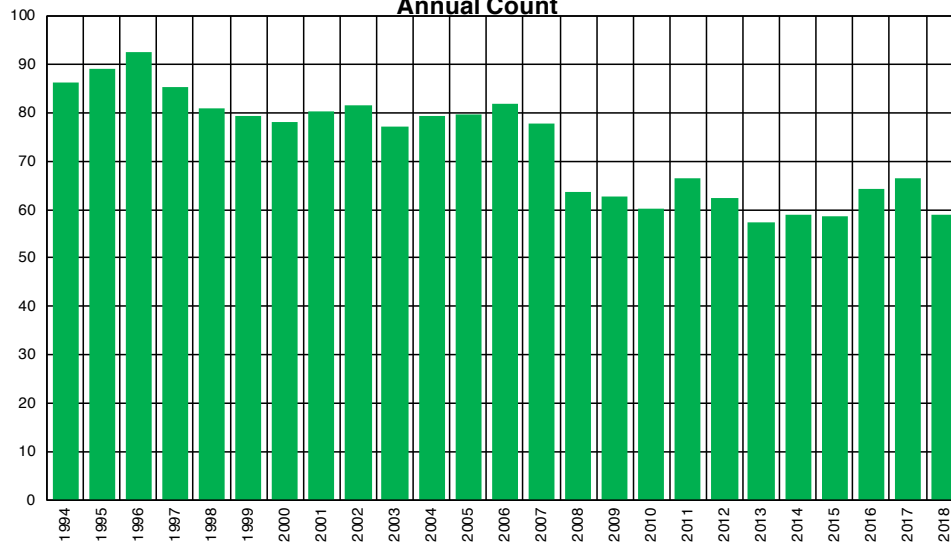


NEW JERSEY Fatal Motorcycle Crashes per Million Population Annual Count



NEW JERSEY Fatal Vehicle Crashes per Million Population Annual Count



Source: NHTSA Fatality Analysis Reporting System (FARS) 1994-2017 FINAL and 2018 ARF

How to use these charts: The bottom chart, Fatal Vehicle Crashes, is the comparison group for top chart, Fatal Motorcycle Crashes. If you divide the values in the top chart by the values in the bottom chart you obtain the percentage of Fatal Vehicle Crashes that included at least one motorcycle. Additionally, since both charts are reported as per million population, you may compare either chart with any other state or the USA total charts directly.

Why do we start with 1994 data? After our review of the details described in the *FARS Manual* and *FARS Analytical User Manual*, we have determined that there are material and significant changes in the definitions, variables, and terms used in the FARS data base in the years prior to 1994. This means using earlier years will not be useful for current comparisons without careful analysis, documentation, and other complications. Also, vehicle, roadway, and data collection technologies vastly change over time periods greater than 25 years, which again limits the usefulness or introduces significant errors into many long-term comparisons.