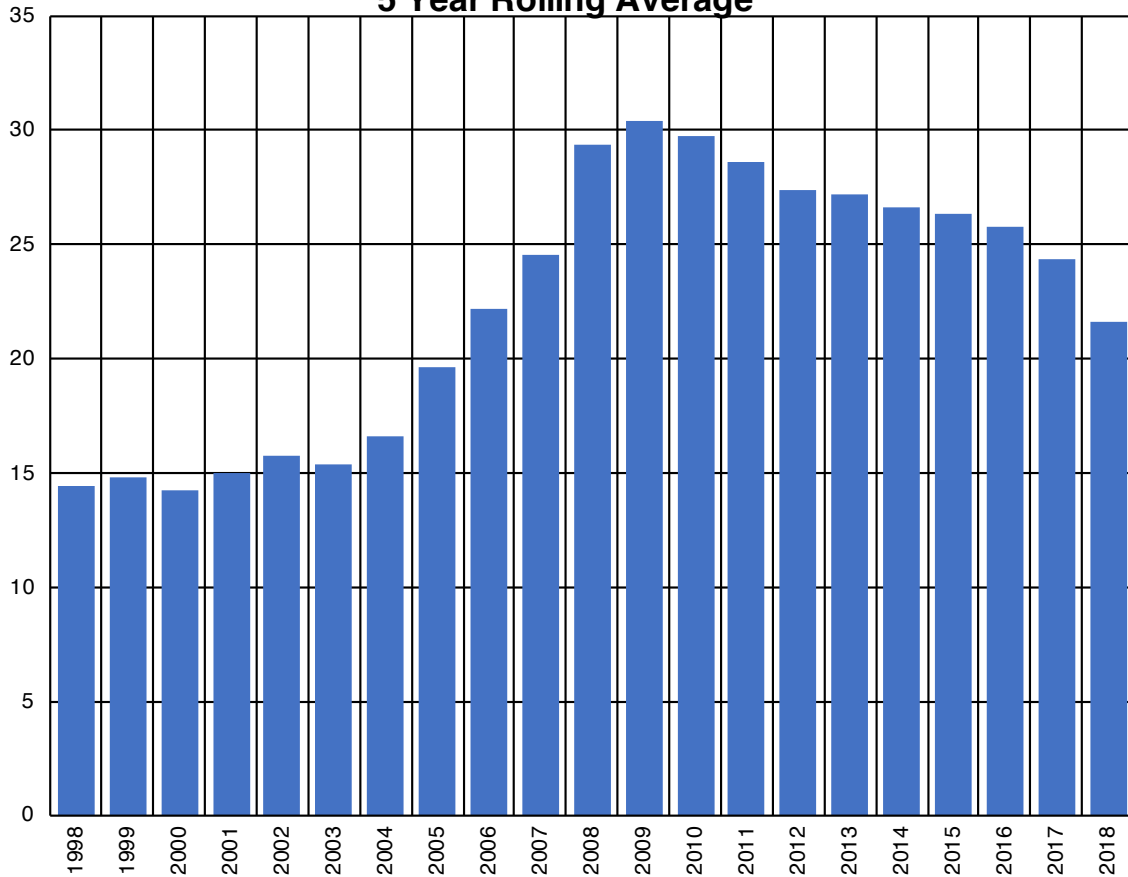


MONTANA Motorcyclist Fatalities 5 Year Rolling Average



Source: NHTSA Fatal Analysis Reporting System (FARS) 1994-2017 FINAL AND 2018 ARF

What are the FARS query variables for selecting motorcyclists?

Vehicle Type = Any type of motorcycle involved in a fatal crash on public roads

Person Type = Anyone that was riding upon the involved motorcycle(s): Operator[Driver] or Passenger

Why use five-year averaging? We use five-year averaging to provide enough data points to smooth out random fluctuations. The 1998 five-year average count equals the counts 1994+1995+1996+1997+1998 divided by 5. The five year average components are then "rolled" forward one year to obtain the next year's average.

Why do we start with 1998 data? The 1998 average includes counts starting in 1994. After our review of the details described in the *FARS Manual* and *FARS Analytical User Manual*, we have determined that there are material and significant changes in the definitions, variables, and terms used in the FARS data base in the years prior to 1994. This means using earlier years will not be useful for current comparisons without careful analysis, documentation, and other complications. Also, vehicle, roadway, and data collection technologies vastly change over time periods greater than 25 years, which again limits the usefulness or introduces significant errors into many long-term comparisons.