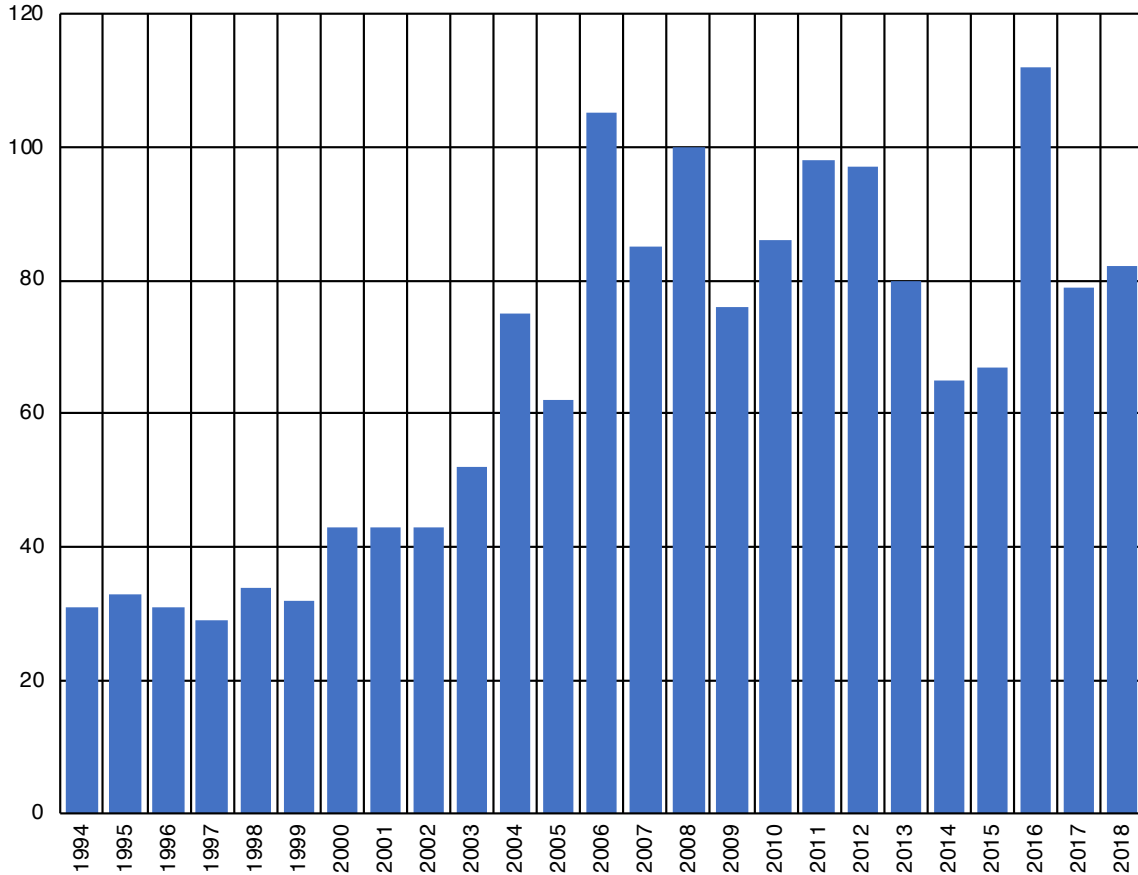


ALABAMA Motorcyclist Fatalities Annual Count



Source: NHTSA Fatality Analysis Reporting System (FARS) 1994-2017 FINAL and 2018 ARF

What are the FARS query variables for selecting motorcyclists?

Vehicle Type = Any type of motorcycle involved in a fatal crash on public roads

Person Type = Anyone that was riding upon the involved motorcycle(s): Operator[Driver] or Passenger

Why do we start with 1994 data? After our review of the details described in the *FARS Manual* and *FARS Analytical User Manual*, we have determined that there are material and significant changes in the definitions, variables, and terms used in the FARS data base in the years prior to 1994. This means using earlier years will not be useful for current comparisons without careful analysis, documentation, and other complications. Also, vehicle, roadway, and data collection technologies vastly change over time periods greater than 25 years, which again limits the usefulness or introduces significant errors into many longterm comparisons.